

GOLD SERIES GS-MINI™

Single Cartridge Dust Collector

Mini Solution for Small Dust Applications



The Gold Series GS-Mini™ is a single-cartridge dust collector for sub 500 CFM applications where you want a dedicated dust collector for one process machine or as a bin vent on a silo. The GS-Mini incorporates the same cam-lock features and structural strength of the standard Gold Series. A Gold Cone® filter cartridge, fan and manual pulse system are included.

STANDARD FEATURES

- 10 Ga. CS Heavy Duty Construction
- HemiPleat™ Filter Cartridge
- Integrated Magnehelic® gage to monitor the pressure drop across the filter
- Right or Left Inlet Location
- Spark-proof Aluminum Fan
- Manual Pulse Controller

OPTIONS

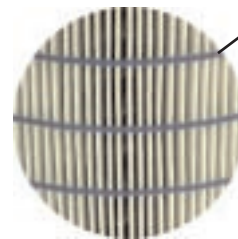
- Automatic Timer Controller
- Heavy Duty Food Grade Casters (two are swivel with locking mechanism)
- Prewired Motor Starter
- Tool-less, Quick-release Dust Drawer to remove dust
- 55-gallon drum Configuration
- Bin Vent Configuration

HemiPleat™ Gold Cone Filter Cartridge

Continuous Gasket

Factory Bonded Steel Top and Bottom Headers

Exclusive Gold Cone Technology



HemiPleat Separator Bead Ensures Uniform Pleat Spacing



	Product Sheet
Gold Series GS-Mini™	
SAFE AIR FOR A SAFE WORK ENVIRONMENT	

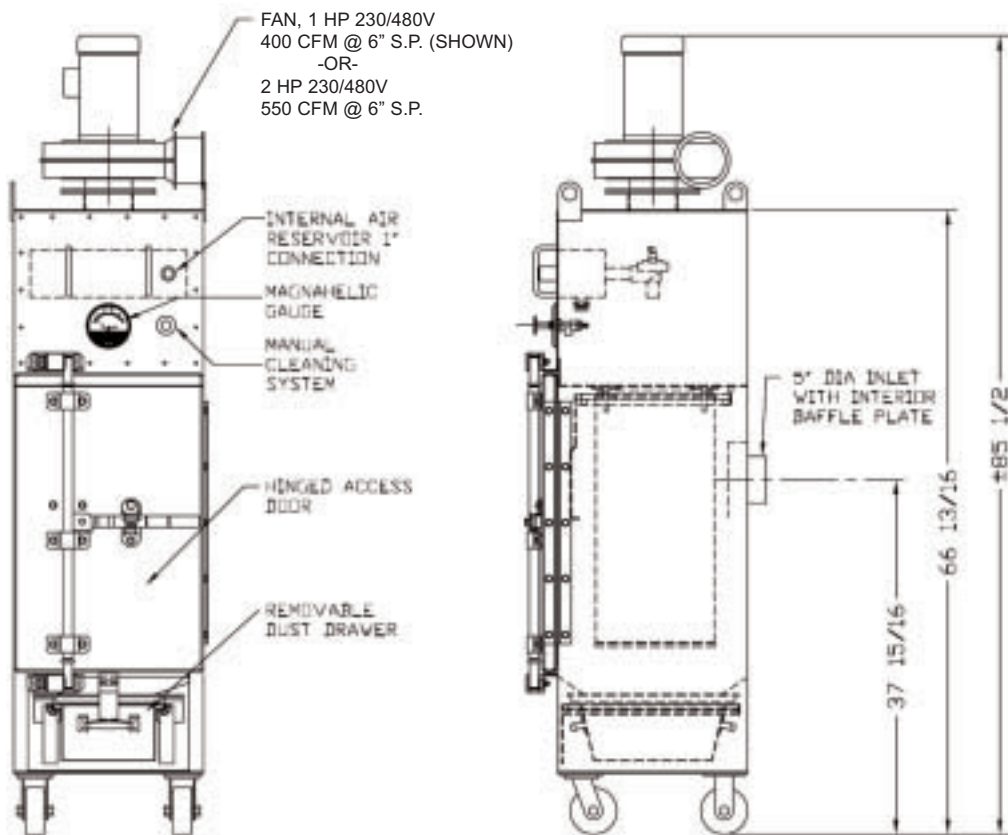
TYPICAL APPLICATIONS

- Sanding & grinding dust
- Food additive/spices
- Talc, cornstarch dust

- Abrasive blasting
- Carbon black/toner dust
- Ambient filtration

- Welding fumes
- Mixing & blending dust
- Mineral, silica dust
- Plastic & composite dust

Specifications



55-gal Drum
Discharge
Configuration



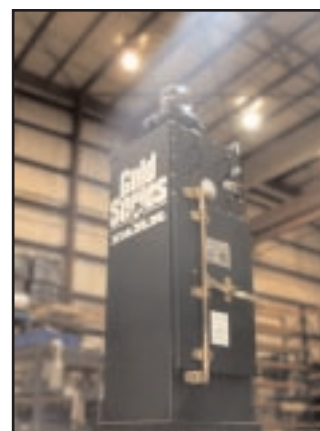
Optional Heavy Duty
Food Grade Casters



Optional Automatic
Timer Cleaning System



Tool-less, Quick-
release Dust Drawer



GS-Mini Bin Vent
Configuration

F
FARR
Air Pollution Control

SAFE AIR FOR A SAFE WORK ENVIRONMENT